

HMB Regulations and Requirements - Basecap Bascinet/Kettle Helms-

Basecap Bascinets with chainmail face will be **Declined** as of **BOTN 2021**.

Basecap Bascinets with bevor can be found late 14th to early 15th century.

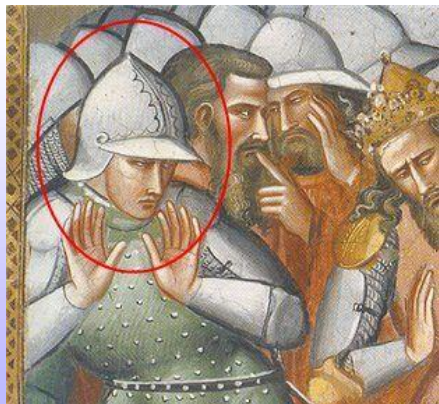
Kettle/Chapel de Fer with chainmail face is **permitted** .

Kettle/Chapel de Fer with bevor is **permitted** for late 14th to early 15th century.

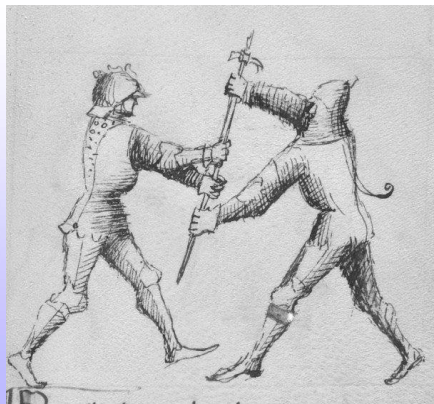
HMB Regulations and Requirements

Basecap Bascinet

“Basecap” bascinet (a more accurate name is “brimmed”) was an open-face helmet used largely in Northern Italy (late XIVth - early XVth) but seen in other areas, sometimes with a bevor. Later modifications could be seen as of the Valere’s Museum brimmed bascinet to match a burgonet.



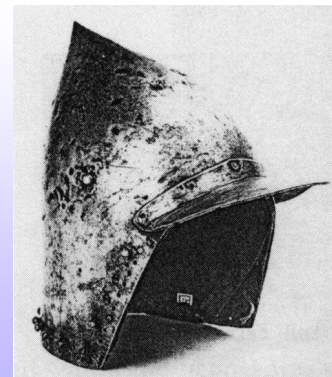
Spinello Aretino, storie di San Benedetto, 1385-1405.



Fiore Dei Liberi, Flos Duellatorum, 1410.



BNF Français 598 De Mulieribus Claris 1400-1425.



Museum de Valere of the Valais at Sion (MV24-83).

XIVth bascinet actualized as burgonet in the XVth.

HMB Regulations and Requirements

Basecap Bascinet with chainmail

Due to its nature, any reproduction of the Basecap Bascinet with chainmail will be **Declined** as of **BOTN 2021**.



HMB Regulations and Requirements

Basecap Bascinet with bevor

Actually, no reproduction of the “basecap” (brimmed) bascinet with bevor match sources. But a sport optimization could still be conceivable.



Gorget plate should end between nose and mouth level.

One bar per eye is **allowed**, one additional centered bar is **allowed**.

Breathing holes in the bevor should be discreet.

chainmail or scale aventail are **allowed**. Fabric aventail is **prohibited**.

Declined



HMB Regulations and Requirements

Kettle Hats / Chapel de fer

Kettle/Chapel de fer with chainmail face is **permitted**.

Kettle/Chapel de fer with bevor is **permitted** for late 14th to Late 15th century.



BNF Français 755 - Roman
de Tristan - 1320-1330.



BNF Français 2608 - Les grandes
Chroniques de France - 1390-1405.



Paulus Kal Fechtbuch - Cgm
1507 - 1450-1479.



Aragonese Kettle Helm -
Musée de l'armée - 1470.

HMB Regulations and Requirements

Kettle Hats / Chapel de fer with chainmail

Kettle/Chapel de fer with chainmail up to the face is **permitted**.

Declined



Historic



Approved



HMB Regulations and Requirements

Kettle Hats / Chapel de fer with bevor

Kettle/Chapel de fer with bevor is **permitted** for late 14th to early 15th century.

Declined



Historic



Approved

