



Historical Medieval Battle
International Association

HMBIA Authenticity
Committee

HMB Regulations and Requirements- Flat Face Bascinet

This document covers the various bascinets which have flat face visors, such as the Spoletto, ROA (Romance of Alexander), and others without specific names.

HMB Regulations and Requirements

Spoletto

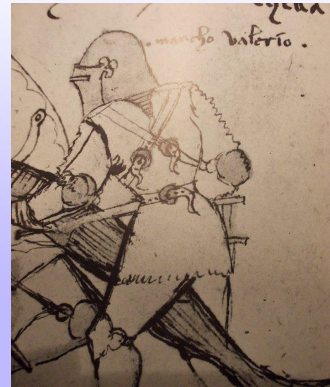
The Spoletto (named for one of the best sources for this helm design).

The chin of the helm should **not** be overly long, it should follow the line of the helm..

Holes in visor must be round and should not be excessive in size or number.

No more than 1 internal eyebar per ocular. Oculars should match historic shapes.

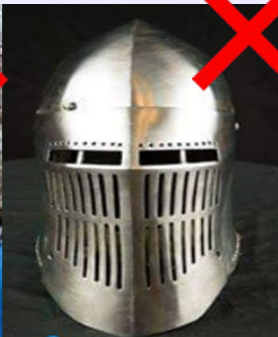
Spoletto can be used with chainmail/scale aventail fixed from inside or chainmail/scale gorget



HMB Regulations and Requirements Spoletto

Declined

Excessive holes. Slotted holes.
Poorly shaped eye slots.



Overly Long Visor



Poorly shaped visors
and skulls. Fabric and
leather aventails



HMB Regulations and Requirements- Romance of Alexander Bascinet (ROA)

This visor is called the ROA; multiple manuscripts mean different makers all draw a very similar bascinet with flat style visor.

Multiple eyebars are allowed as long as they are made as part of the visor and not mounted to the outside of visor. Decorative crosses must have the additional designs as seen in reproductions below



HMB Regulations and Requirements Romance of Alexander Bascinet(ROA)

Only chainmail and scale aventails are allowed with
this helm

Ocular is bigger than
25 mm is declined
No historic examples
of the visor or of a one
piece bascinet(no
visor)



Declined



HMB Regulations and Requirements

Italian Klappvisors

This exact style of Italian Klappvisor Bascinetets were used in late 14th century Italy. They should follow the rules of all other bascinets.

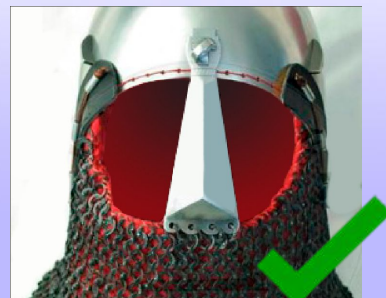
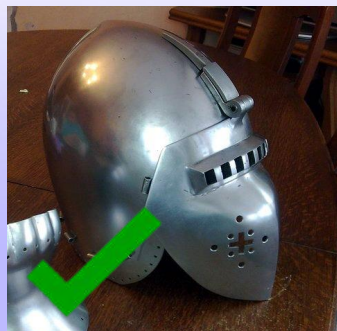
Declined due to Etching and wrongly shaped visor.

Only chainmail aventails are permitted.



HMB Regulations and Requirements

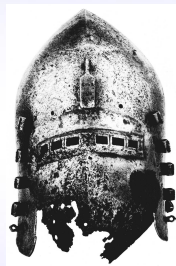
Visor Connections



HMB Regulations and Requirements

German Klappvisor

The aventails for these bascinets will follow the Aventail rules previously published.



HMB Regulations and Requirements

German Klappvisor

Typical mistakes

1. Excessive holes
2. Poorly shaped visor
3. Eyeslots improperly designed
4. Decorative elements
5. Visor attachment

